

# Hampshire County Council Climate Change Strategy 2020-2025

---



# HAMPSHIRE 2050

VISION FOR THE FUTURE



Demographic and societal challenges



Economy



Work, skills and lifestyle



Environment and quality of place



Mobility, connectivity and energy



Rural Hampshire

## Hampshire 2050 Commission of Inquiry

The Commission of Inquiry - Vision for Hampshire 2050 was established in 2018 to consider evidence, deliberate upon key issues and to make recommendations on a high level and long-term Vision for Hampshire to 2050 which would guide and contribute to the future prosperity, quality of life, protection and enhancement of the character and environment of Hampshire.

The 2050 Commission identified the changing climate as the most important driver for change in Hampshire.

It was recognised that a well-adapted and resilient Hampshire will be essential to ensure that Hampshire's economy,

environment, and society continue to thrive and prosper. The Commission recommended that Hampshire County Council develop and promote a strategic focus on embedding climate resilience and mitigation across key policies and sectors with communities across Hampshire.

In addition, meeting the legally binding target of net zero emissions target by 2050 set by Government will require a Countywide response.

This Strategy sets out the Council's approach to delivering a strategic focus to tackling both the sources and the impacts of climate change in Hampshire.

# Climate Emergency and Targets

Hampshire County Council declared a Climate Emergency in the summer of 2019.

Two targets have been set for the County Council, and these also apply to Hampshire as a whole:

**2050**

**Carbon neutrality**

Hampshire County Council set a target to be carbon neutral by 2050, in line with national government. Hampshire County Council also uniquely set a target to build resilience to the impacts of a two-degree Celsius rise in temperature.

**2°C**

**preparing to be  
resilient to the impacts  
of temperature rise**

This target recognises the critical role we have in ensuring that not only are we resilient and able to continue to deliver our services, but also ensuring that our infrastructure, environment and communities are prepared too.

# Our Vision

Recognising the changing climate as the biggest threat, a well-adapted and resilient Hampshire will be essential to ensure that Hampshire's economy, environment, and society continues to thrive and prosper.



# Our Approach — To Lead, Empower and Stimulate action on climate change

---

Hampshire County Council and its partners must demonstrate leadership and embed climate change mitigation and resilience into all key policy areas to effectively enable our communities to tackle this issue. This approach will require a broad range of measures and step changes in lifestyles, policies, strategies and investment decisions across all levels of our society and a commitment to adhere to this.

Some of the responses and mitigating actions to counteract climate change are likely to stem from embracing new technologies, building new sustainable homes by utilising and encouraging the use of sustainable building materials, reducing and conserving energy and water, reducing waste,

using local and sustainable energies, investing further in sustainable transport options and developing natural flood management systems.

Communication, education and behavioural changes for our partners and communities will be fundamental in fostering this change.

# Our Policy

Develop and promote a focus on embedding climate resilience and mitigation across key policies and sectors, working with communities across Hampshire.





# The Strategy — Key Principles

---

This Strategy is based upon a set of key principles which will underpin the approach taken by Hampshire County Council. These principles will guide and shape the policies, actions and partnerships developed to deliver the Climate Change targets for Hampshire.

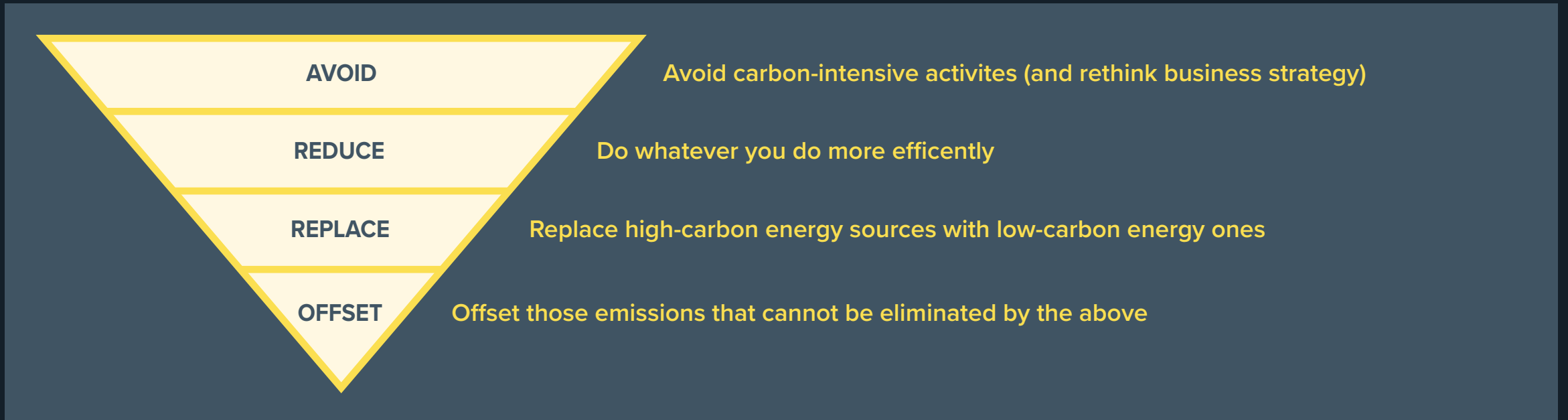


# The Strategy — Key Principles

---

## 1. Carbon Hierarchy

This Strategy will follow the principles of the Carbon Management Hierarchy as set out in the image below which provides a simple and effective framework for how the County Council will approach meeting its emissions target.





# The Strategy — Key Principles

---

## 2. Co-benefits

Within each Strategic Priority, actions that deliver co-benefits will be prioritised. Many actions to reduce emissions and build resilience if done well can deliver multiple benefits for our communities such as reducing congestion, improving air quality, improved health, and economic growth.

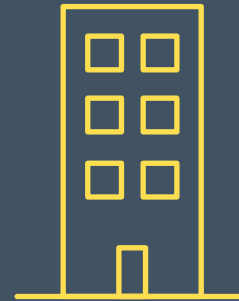


# The Strategy — Key Principles

---

## 3. Proportionate, Affordable, Equitable

As a local authority it is important to recognise our wider role to society in delivering public services for the public good. Any actions taken on climate change must be in line with this and would therefore have to adhere to the principles of proportionality, affordability and be equitable.



# The Strategy — Key Principles

---

## 4. Accelerate Where Appropriate

The Council's carbon neutral for 2050 target was based on National Government's target. It is important to state that any opportunity to accelerate delivery will be taken in line with the other key principles set out in the Strategy, in particular the availability of resources and funding.



# The Strategy — Key Principles

---

## 5. National Government — Policy and Funding

There are significant challenges to Hampshire achieving its targets, particularly the emissions reductions given the limited control the County Council has over the big sources of emissions - transport and residential. Achieving these targets will require National Government action and changes to the national policy landscape. It will require a clear funded roadmap to 2050 and support for action at a local level.



# The Strategy — Key Principles

---

## 6. Digital and Innovation

The Hampshire 2050 Commission identified Changing Technology as a key driver for change in Hampshire. Technology is an enabler that could deliver a significant step change towards a low carbon, resilient Hampshire. It is therefore recognised as a Key Principle in this Strategy and that the Council will actively prioritise the development and delivery of innovation and digital to support the climate change agenda.





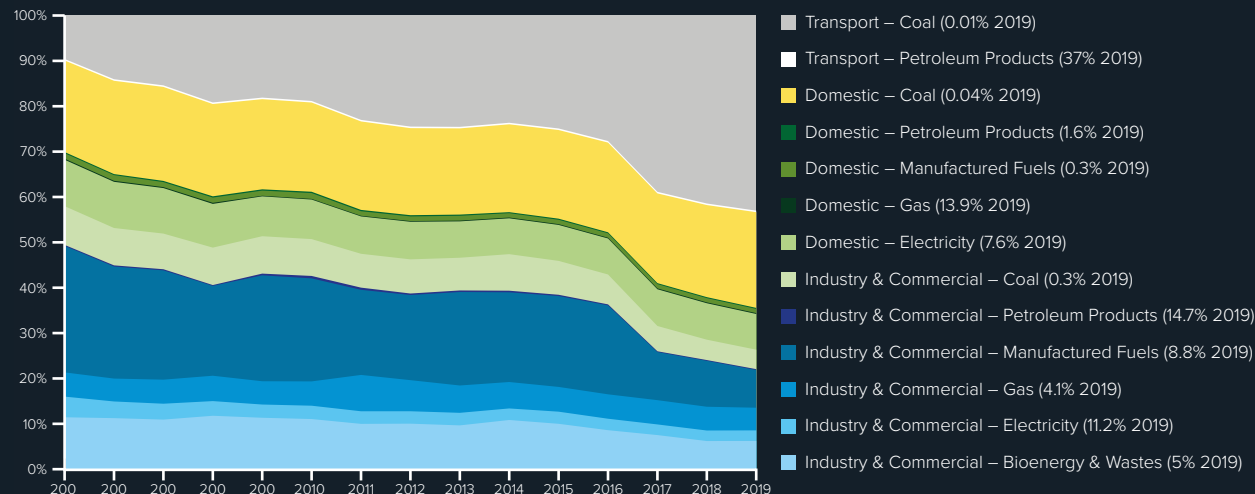
# Baseline Carbon Emissions

This is the Baseline Emissions for the Hampshire area (excluding Southampton, Portsmouth and the Isle of Wight).

It provides an overview of the main sources of emissions in Hampshire and within each sector the fuel types are arranged by carbon intensity, with the most intensive at the top.

The use of Petroleum Products in Industry is diminishing,

however this is offset by substantial growth in Transport. As a local authority, the biggest influence we can have on emissions is on the transport and residential sectors. However, by working in partnership with the private sector we can have influence on the Industry and Commercial sector where the emissions are mainly from manufacturing.



## 2019 Baseline Emissions by Sector

Industry and Commercial – 38.89%

Transport – 36.98%

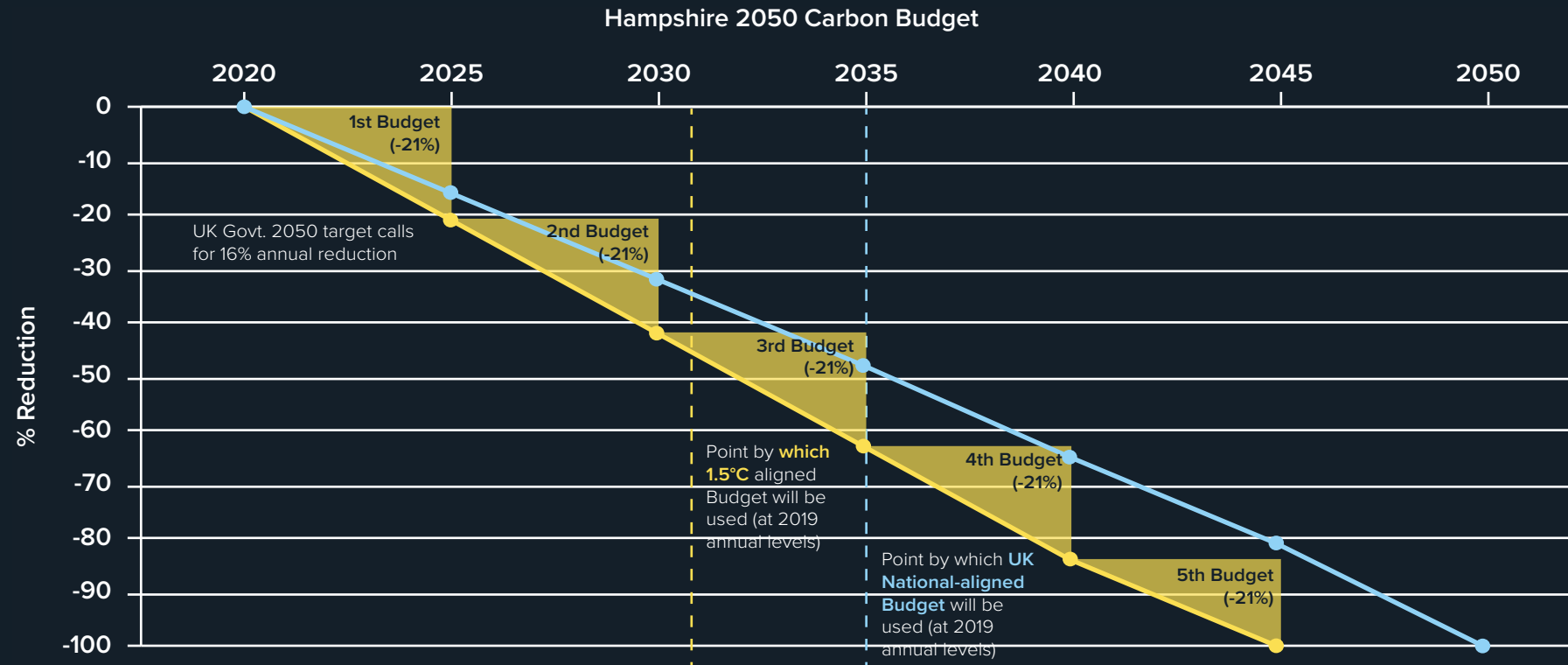
Domestic – 23.66%

Waste – 0.46%

# Carbon Budgets to 2050

The five yearly carbon budgets set out the pathway to meeting the carbon neutral pathway to 2050 (in line with the UK 2050 National target).

With no change to current emissions, Hampshire will use up the 2050 target budget by 2035, and the 1.5°C Paris Agreement budget by 2031.



# Strategic Principles

---

The Strategy is focussed on the key sectors that contribute to emissions and where resilience needs to be built. These sectors are the Strategic Priorities for the Council's approach. The strategy provides clarity within each sector what the Council will focus on both for emissions reductions and resilience.

The Strategy also identifies supporting Hampshire County Council policies/strategies that already exist that contribute towards the delivery of these strategic priorities.

The Action Plan will draw out the details of the actions being undertaken that will contribute towards these priorities. Where there are gaps these will be addressed through the monitoring and evaluation process.



# Hampshire County Council

---

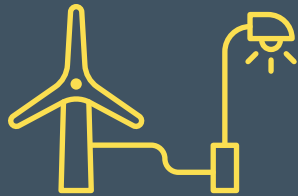
## Organisational Emissions

To deliver carbon neutrality for and build resilience into the Council's own operations, estate, and fleet by 2050. Leading by example, enabling and promoting more sustainable long-term practices.

The areas covered by Scope 1-3 are set out in this document. The Council will set out in its action plan a clear pathway to achieving carbon neutrality by 2050

across these areas, prioritising Scope 1 and 2 in this first five-year strategy, moving towards a stronger focus on Scope 3 from 2025 onwards.

This approach will drive action and leadership on the emissions for which the Council has direct control, moving towards a more influencing and enabling role within the wider Hampshire area.

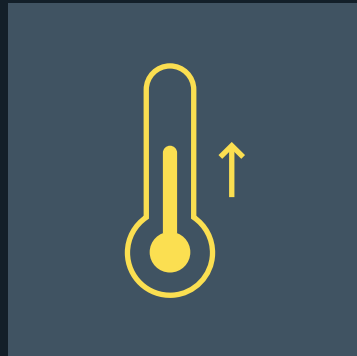
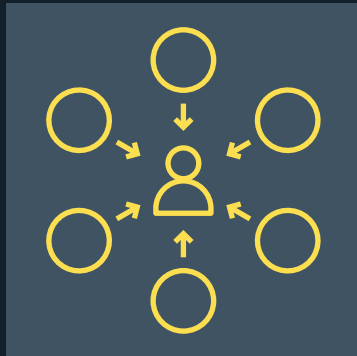


# Hampshire County Council

---

## Organisational Resilience

Hampshire County Council will ensure that it is resilient to the impacts of a changing climate, planning for a two degree rise in temperature. The Council will ensure that impacts on its service delivery, operations, estate, and fleet are reduced and managed through robust risk management and future proofing.





# Hampshire County Council

---

## Organisational Emissions Strategic Priorities

### Scope 1

- Fuel combustion — buildings
- Company vehicle

### Scope 2

- Purchased electricity, heat and steam — buildings and streetlighting

### Scope 3

- Purchased goods and services
- Business travel
- Employee commuting
- Waste disposal
- Use of sold products
- Transportation and distribution (up-and downstream)
- Leased assets and franchises

## Organisational Resilience

- Operational resilience — service delivery (highways, waste, Children & Adults Services)
- Temperature — overheating/cooling of assets
- Resilience to severe weather, flooding
- Emergency planning — Staff, Public Health
- Economic resilience — invest now save later

## Supporting Policies/Strategies

- Corporate Procurement Strategy
- Strategic Asset Management Plan
- Strategic Plan for 2017-2021
- Carbon Emissions Reporting

# Hampshire-wide Emissions and Resilience

---



## Transport

To enable, support and deliver a reduction in transport-related carbon emissions to net zero (neutrality) by 2050 and a resilient transport network.

The priority for Transport will be to work with partners to develop a more holistic approach for communities and places that ultimately reduces the need to travel, increases the uptake of walking, cycling and public transport, alongside supporting and promoting the electrification agenda. It will also be critical to ensure that the transport network is resilient and plans for the current and future impacts of climate change.

## Strategic Priorities

### Emissions

- Active transport
- Public transport
- Fuel type
- Travel planning
- Digital enablers
- Electrification
- Highways / construction materials

### Resilience

- Network resilience (tree fall, flooding etc.)
- Weather resistant materials
- Highways infrastructure - overheating

# Hampshire-wide Emissions and Resilience

---



## Transport

### Supporting Policies/Strategies

- Local Transport Plan
- Cycling strategy
- Walking strategy
- Traffic Management Policy
- Highways Asset Management Policy
- Highways Asset Management Strategy



# Hampshire-wide Emissions and Resilience

---



## Residential

To enable, support and deliver a reduction in residential-related carbon emissions to net zero (neutrality) by 2050 and a resilient housing stock — both existing and new.

The priority for the residential sector will be to drive down emissions across all existing and new households through the three principles of reducing energy usage, increasing energy efficiency, and switching to low carbon, renewable sources of energy. Building resilience will also need to be considered alongside emission reductions, ensuring houses are fit for purpose. Partnership working with local councils and community groups will be key to delivery.

A significant element of this work will be around influencing and enabling behaviour change and lifestyle choices.

## Strategic Priorities

### Emissions

- Energy efficiency and reduction
- Community energy
- Fuel Switching / new technology/ fuel types
- On-site renewable energy generation
- Behaviour change

### Resilience

- Overheating
- Insulation
- Reducing flood risk
- Community resilience and planning

# Hampshire-wide Emissions and Resilience

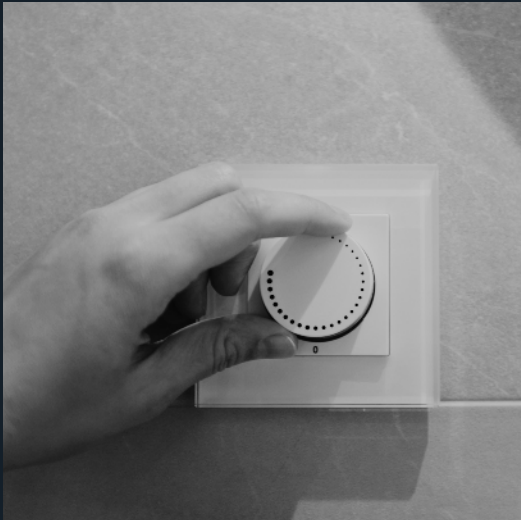
---



## Residential

### Supporting Policies/Strategies

- Emergency planning
- Local and Neighbourhood Plans





# Hampshire-wide Emissions and Resilience

---



## Buildings and Infrastructure

To enable, support and deliver a reduction in carbon emissions associated with the built environment to net zero (neutrality) by 2050 and a climate resilient infrastructure — both existing and new.

The priority for buildings and infrastructure will be to work with stakeholders to develop a holistic systems-based approach that considers the whole-life cycle of construction to occupation including the consumption of energy and water, and the integration climate change adaptation.

## Strategic Priorities

### Emissions

- Energy efficiency
- Energy consumption
- Whole life cycle embedded carbon
- On-site renewable energy generation
- Integration with wider renewable energy generation and electrification
- New technologies/fuel types
- Utilities — water, gas, electricity — energy demand reduction and decarbonisation

### Resilience

- Ventilation/overheating/insulation
- Reduce consumption of resources (water, energy)
- Planning - new developments (e.g. SUDS)
- Biodiversity and green infrastructure
- Resilience to weather, flood risk
- Preservation of historic buildings
- Water resilience

# Hampshire-wide Emissions and Resilience

---



## Buildings and Infrastructure

### Supporting Policies/Strategies

- [HIPOG Climate Change Adaptation Guidance — January 2019](#)



# Hampshire-wide Emissions and Resilience

---



## Energy Generation and Distribution

To enable and support renewable energy generation capacity and distribution across the county with a focus on providing low carbon, resilient energy to residents and businesses, whilst reducing costs.

The priority for Energy will be to work with local partners and communities to actively promote and enable the generation of local, renewable, resilient energy which would stimulate and support green growth in Hampshire maximising the use of technology and innovation. This should be delivered through a range of initiatives at all scales — i.e. large-scale, community owned or individual household schemes.

### Strategic Priorities

#### Emissions

- Renewable energy
- Decarbonise grid/gas
- New technology
- Battery storage

#### Resilience

- Resilient energy systems

# Hampshire-wide Emissions and Resilience

---



## Energy Generation

### Supporting Policies/Strategies

- [Hampshire Energy Strategy](#)



# Hampshire-wide Emissions and Resilience

---



## Waste and Circular Economy

To drive, enable and deliver a reduction in waste and increased reuse, repair, and recycling rates whilst developing and implementing low carbon solutions to waste collection and disposal.

The priority for Waste will be to work with government and partners to actively drive a reduction the waste generated and promote a circular economy approach across all parts of society from household waste to commercial. This will be delivered through increased producer and consumer responsibility and through behaviour insights, education, technology, and innovation.

## Strategic Priorities

### Emissions

- Disposal
- Waste prevention
- Reuse
- Recycling
- Closed landfill

### Resilience

- Resilient waste systems



# Hampshire-wide Emissions and Resilience

---



## Waste and Circular Economy

### Supporting Policies/Strategies

- [Hampshire Minerals and Waste Plan](#)
- [Assessment of Need for Waste Management Facilities in Hampshire: Landfill and Surcharging Report](#)
- [Hampshire Joint Municipal Waste Strategy](#)



# Hampshire-wide Emissions and Resilience

---



## Natural Environment

To protect, enhance, improve and develop the natural environment maximising the opportunity to manage and increase habitats, landscapes, and biodiversity which in turn support carbon sequestration and climate resilience.

The priority for the Natural Environment will be to work with partners to understand and develop the value of Hampshire's natural capital, as well as the risks to it from climate change and foster sustainable practices that will support carbon sequestration as well as mitigate the impacts of climate change.

## Strategic Priorities

### Emissions

- Carbon sequestration
- Landscape/habitat creation management/ Tree planting
- Farming/Food production

### Resilience

- Non-invasive resilient trees (disease-resistant)
- Flood and water management
- Biodiversity/habitat preservation
- Sea level rise and coastal erosion
- Adaptive management of farms

# Hampshire-wide Emissions and Resilience

---



## Natural Environment

### Supporting Policies/Strategies

- [Hampshire Tree Strategy](#)
- [Local Flood and Water Management Strategy](#)
- [Hampshire Biodiversity Information Centre Quality Assurance Policy](#)
- [Hampshire Countryside Service Access Plan 2015-2025](#)



# Hampshire-wide Emissions and Resilience

---



## Business and Green Economy

To support, enable and promote a resilient green growth economy through leadership, technology, innovation.

The priority for Business and the Green Economy will be to work with partners to actively promote green growth, providing a clear direction for businesses and industry to develop and grow skills, products, new technologies and innovation, with a particular emphasis on digital, to support the transition to carbon neutrality and building business resilience through for example remote working.

## Strategic Priorities

### Emissions

- Green technology
- Renewable energy
- Electrification
- Business emissions
- Digital

### Resilience

- Business continuity
- Skills

# Hampshire-wide Emissions and Resilience

---



## Business and Green Economy

### Supporting Policies/Strategies

- [Business Services Sustainability Report](#)





# Partnerships

## Hampshire 2050 Partnership

The renewed focus on climate change for the County Council started with the outcomes of the Hampshire 2050 Commission of Inquiry. The Hampshire 2050 Partnership, which was created to oversee the delivery of the recommendations of the 2050 Commission is made up of all the key public sector organisations in Hampshire — with every District/Borough/City/Unitary authority represented alongside other key authorities from blue light, health, National Parks and the Enterprise Partnerships etc.

Many of these partners have also declared climate emergencies or have stated that climate change is a key priority. This clearly demonstrates the commitment across the public sector to work together to tackle climate change across Hampshire. The Hampshire 2050 Partnership will therefore play a critical role in the delivery of and accountability for this strategy which is set out further in the Governance section.



Demographic and societal challenges



Economy



Work, skills and lifestyle



Environment and quality of place



Mobility, connectivity and energy



Rural Hampshire



# Partnerships

## Public Sector Working Groups

There are currently a number of public sector officer led working groups that meet to share information on actions being undertaken on climate change and sustainability best practice and to collaborate on joint projects and initiatives.

- 1. Hampshire Sustainability and Energy Officers Group (HESOG)** – all the Districts, Boroughs, Cities and Unitaries including Southampton, Portsmouth, the Isle of Wight and its main focus is climate change – more recently delivering against the Climate Emergency declarations.
- 2. Public Sector Sustainable Development Group (PSSDG)** – includes organisations such as Fire Service, NHS, MoD, University of Winchester, Southampton, Portsmouth and Solent Universities, national parks and looks at wider sustainability issues.
- 3. Hampshire Energy Efficiency Partnership (HEEP)** – energy, sustainability or housing officers from Hampshire County Council, Portsmouth and Southampton City Councils, Isle of Wight Council, and district councils within Hampshire and is more focused on energy.
- 4. Hampshire and Isle of Wight Planning Officers Group Sustainable Design Subgroup (HIPOG SDSG)** – representatives from Local Authorities and aims to share best practice, promote, and inform sustainability through planning.



# Partnerships

## Other Partnerships/Networks

The public sector is one aspect of partnership working that is needed to successfully tackle climate change. It is also extremely critical that we work in conjunction with expert organisations, businesses, and other stakeholders.

The County Council will work through the wide range of existing partnerships to ensure that climate change is embedded into every aspect of its work. It will maximise opportunities offered by these existing networks and

partnerships to develop best practice, policies, projects, and initiatives to support, enable, and stimulate the delivery of action on the ground.





# Partnerships

## Community Engagement – Expert Consultative Forum

Residents and communities have a key role to play in reducing emissions from their own homes and through lifestyle choices, or as communities taking local action. There are many examples of successful community energy projects demonstrating the ability of communities to take direct action.

Community engagement will therefore be a key component of how the Strategy and Action Plan are delivered. To provide an opportunity for meaningful engagement an Expert Consultative Forum will be convened. The Forum will be made up of relevant professionals, academics and

community representatives from a range of organisations across Hampshire and would advise on both the development and the delivery of actions within the plan.



# Communications

## Behavioural Insights Led

The County Council recognises that significant changes in lifestyle and behaviours of residents alongside the policy and intervention work will be necessary to deliver the scale of change needed to deliver against the targets set.

A key strand of the climate change work programme will therefore focus on how the Council engages, educates, and communicates with residents to encourage and enable changes in behaviour across the community on both emissions reductions and resilience. This engagement and communications will be based on robust evidence and behavioural insight research which was undertaken by the County Council's Insight and Engagement Unit.

The research identified the key opportunities for, and barriers to, achieving desired behaviour changes among citizens by exploring people's capacity, opportunity and motivation to change behaviour — and by assessing how much change might be possible, where, with whom (including demographic and Mosaic profiles) and when.

An assessment of the carbon impact of desired behaviour changes, together with potential health benefits, was also undertaken. The research also assessed the evidence of the most effective ways of communicating and ultimately achieving behaviour change. This work underpins all the communications and engagement work that will be delivered to support this strategy and the supporting action plan.



# Communications

## Website

A climate change website has been created where details of the Strategy and Action Plan, alongside key information for residents, businesses and other partners/stakeholders will be presented.

The Strategy and the Action Plan will be web-based which will be regularly updated to provide live, up to date links to projects, actions, case studies, reports etc. providing a more useful resource for the Council and its partners.

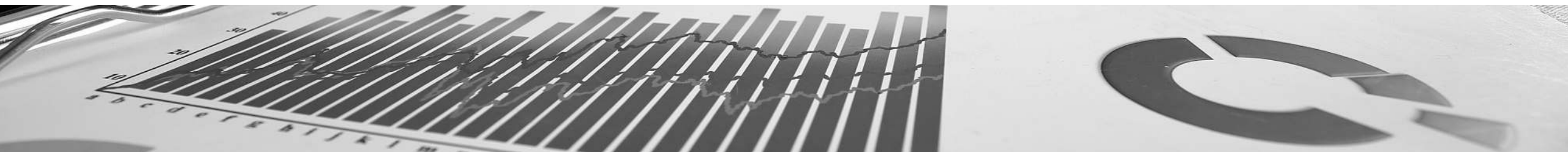
[hants.gov.uk/climatechange](https://hants.gov.uk/climatechange)



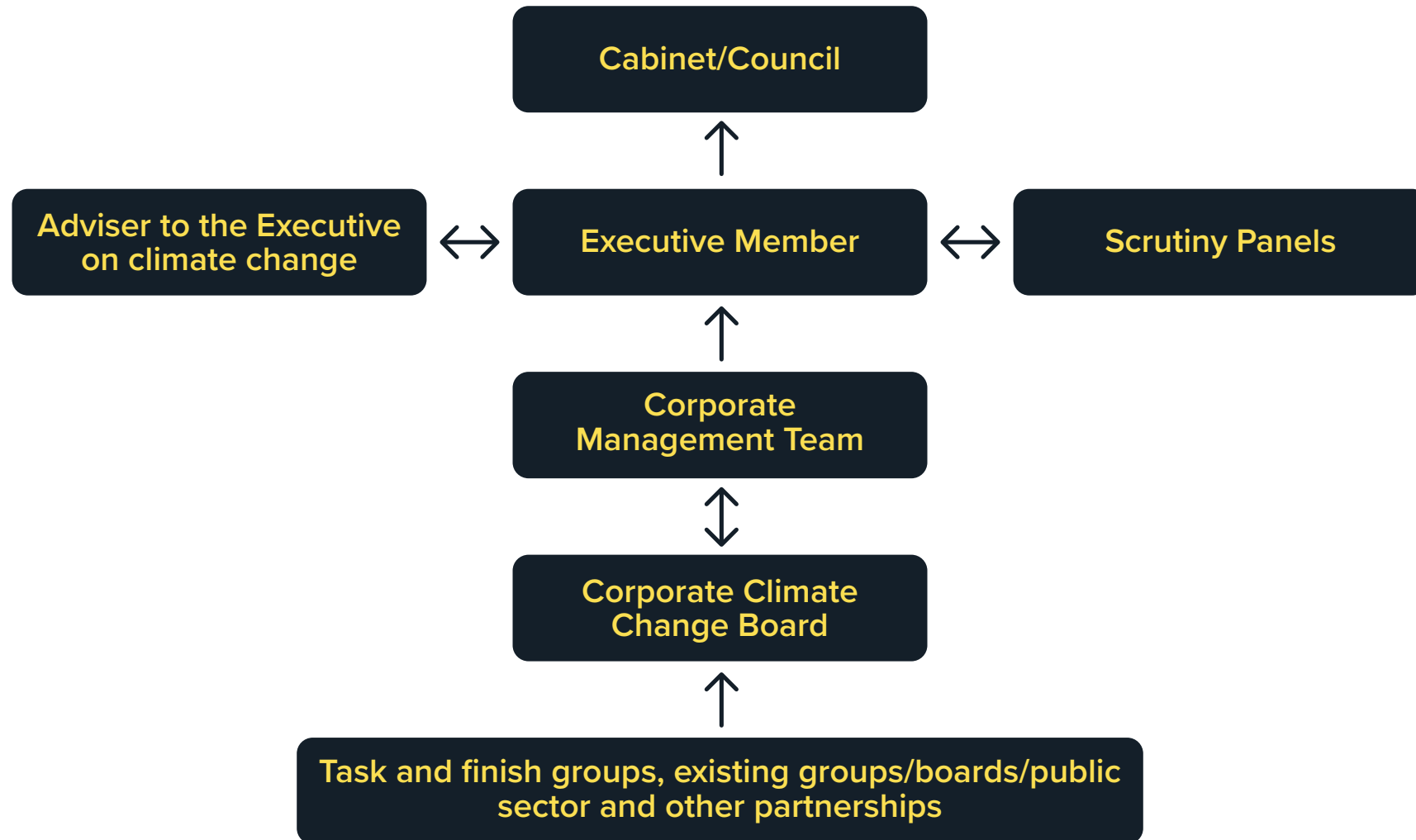
# Monitoring, Evaluation and Reporting

**It is essential that there is a transparent process for monitoring and evaluating progress against the targets set.**

- 1.** The strategy along with the Strategic Priorities will be reviewed every five years to consider any opportunity to accelerate delivery, to ensure that the focus of the priorities is still valid and that any new risks are taken into account for resilience.
- 2.** The supporting action plan will be reviewed annually.
- 3.** Progress will be reported annually against the action plan to Hampshire County Council Cabinet and to the Hampshire 2050 Partnership.
- 4.** Monitoring of the actions in the Action Plan will be coordinated by the Climate Change Team and overseen by the Climate Change Board (see Governance section).
- 5.** A decision-making tool will be developed and implemented for all key County Council decisions to assess the positive or negative impact on climate change mitigation and resilience. This will be applicable to all Key Decisions within the County Council.



# Governance



# Governance

A Climate Change Team has been established to oversee the monitoring and review of the strategy and action plan, alongside some key strategic programmes of activity.

Cabinet will receive regular updates on progress with the climate change work programme.

Regular progress updates will also be provided to the Leader, Executive Member for Economy, Transport and Environment and the Adviser to Executive on Climate Change, who will also have direct roles in championing, enabling and supporting the successful delivery of the climate change programme.

Engagement with relevant Scrutiny Panels will also be undertaken as required.

Annual reporting on progress with delivery of the action plan and the five-yearly review of the strategy will be reported to Cabinet and then to Full Council.

A Climate Change Board has also been established and is made up of representatives from each of the Council's departments. The Board members will amongst other responsibilities act as champions for climate change internally and externally, and co-ordinate and maintain strategic oversight of climate change activity and initiatives across the County Council.

